



DODAM Engineering & Construction CO.,LTD.

SINCE 1997



Carve Out A Future With The Power Of Technology

DODAM

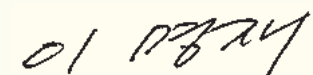
“ The name ‘DODAM’ originates from an old Korean word which means skillful and appealing.

Established in July 1997, Dodam Engineering & Construction Co., Ltd. functions as a venture company which lies its philosophy on the state of the art technology and maintaining the effective skills that are suitable for this new generation

Our company is determined to use high class technical experts in creating and introducing advanced technologies in order to stand out amongst the worldwide industry as a unique and innovative corporation.

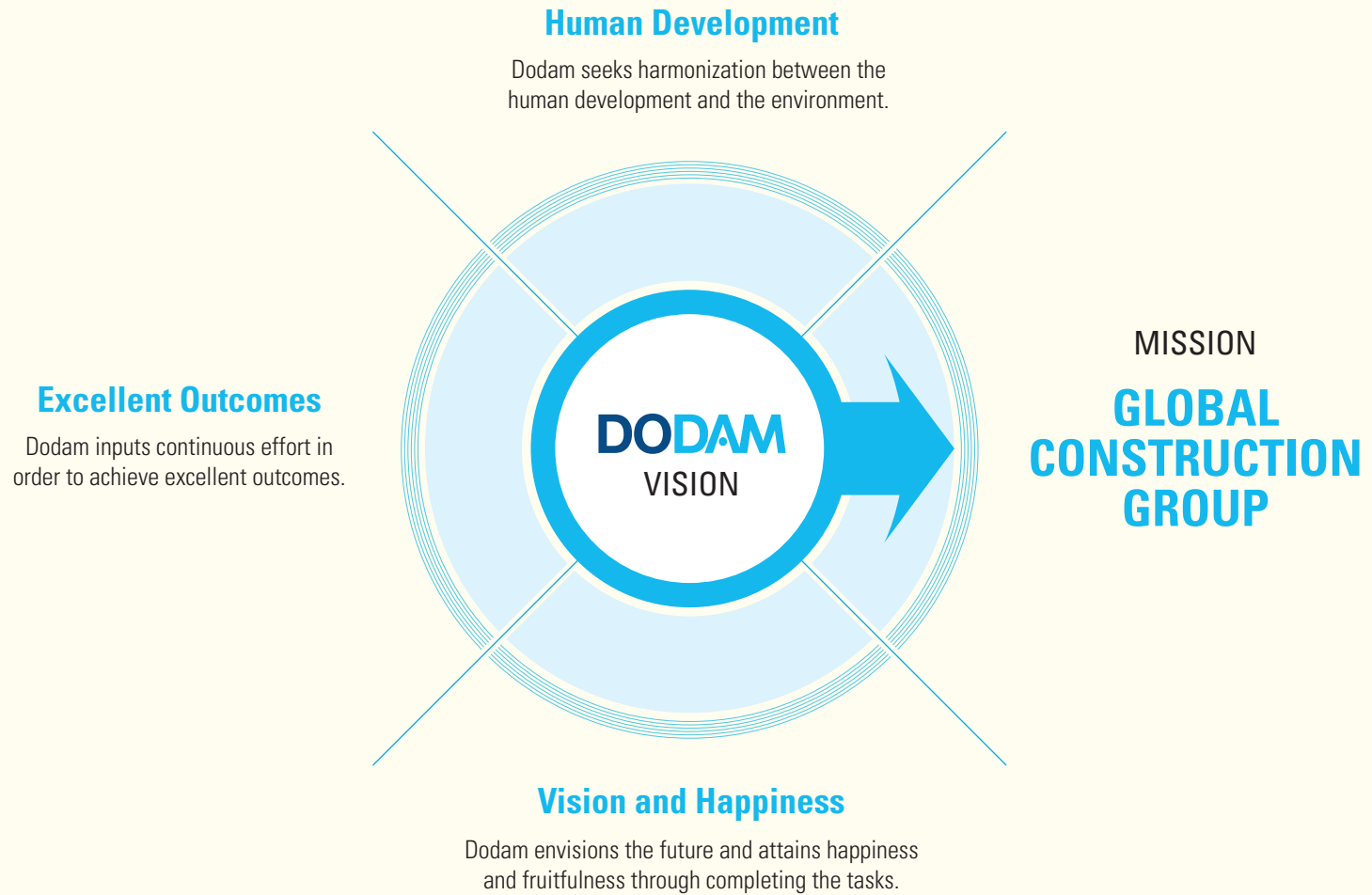
By utilizing our advanced technology obtained from dynamic research, we are looking forward to take part in being the capstone of construction and provide excellent service towards the clients

Warmest Regards



Myung Jae Lee
President and Chief Executive Officer

【 Mission & Vision 】





Name : **Dodam Engineering & Construction Co., Ltd.**

Chief Executive Officer : Myung Jae Lee

Paid-In Capital : USD 2.2 Million (KRW 2,200,000,000)

Website : <http://www.dodamenc.co.kr/>

Address : **Main Office**

4th floor, 40, Yesul-ro 192beon-gil, Namdong-gu, Incheon, Korea

Tel) +82-32-428-4770 / +82-32-421-4450

<http://www.dodamenc.co.kr/>

Gyeonggi Branch

306 & 317, Anyang Megavalley, 268, Hagui-ro, Dongan-gu, Anyang-si, Gyeonggi-do

Tel) +82-31-420-4770 / Fax) +82-31-420-4449/4450

History : 1997. 07 Established Dodam Engineering Co., Ltd.

1999. 06 Achieved the certification of ISO 9001

1999. 09 Recognized company-affiliated R&D centers

2002. 10 Acquisition of boring grouting license

2003. 04 Changed Company name to Dodam Engineering and Construction Co., Ltd.

2005. 05 Registered as Overseas Construction Company

2005. 11 Acquisition of construction New Technology No.474

2006. 06 Achieved the certification of INNO-BIZ

2006. 05 Acquisition of earthwork industry license

2009. 04 Europe registration of a patent(pressure soilnailing)

2010. 10 Achieved the certification of 14001

2011. 08 Real estate development work report

2012. 01 Acquisition of direct production validation certificate
(Geological Survey and tamsaeop)

2012. 04 Acquisition of ferroconcrete construction license

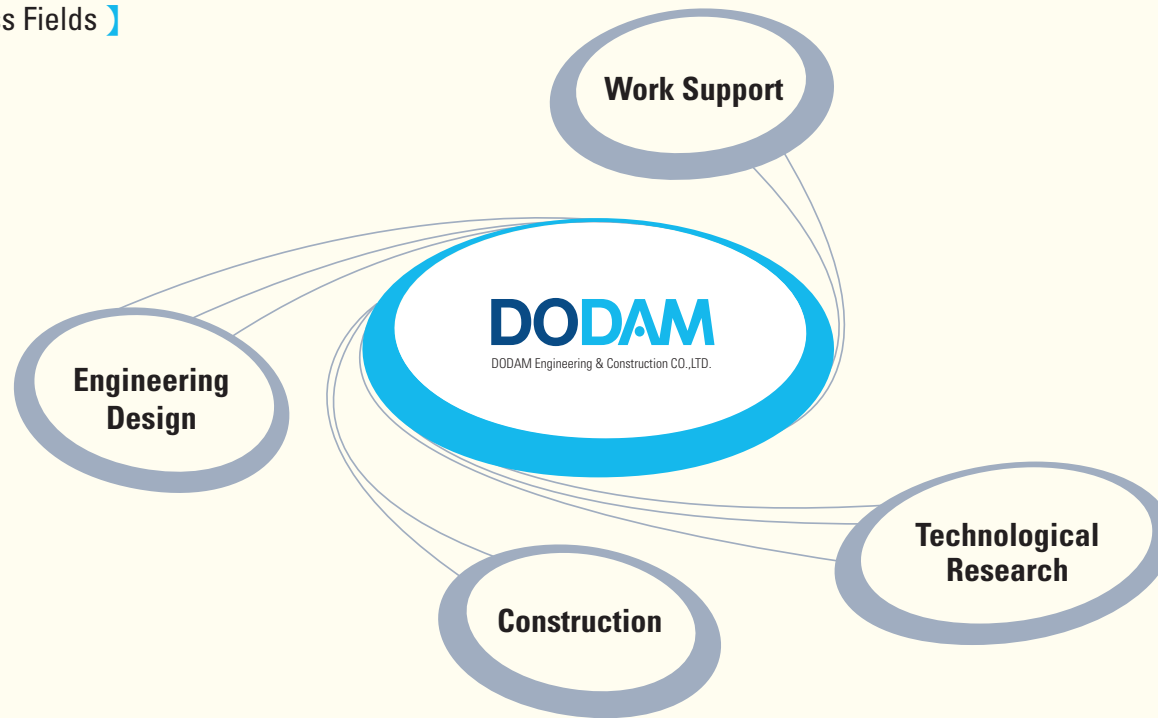
2012. 07 Acquisition of demolition of structures license

2013. 03 Acquisition of prevention new technology No.36

2013. 06 Acquisition of direct production validation certificate(services of a surveyor)

2013. 11 Acquisition of certificate of Venture Business

【 Service & Business Fields 】



Engineering Design

- Road
- Geotechnical and Tunnel
- Transportation
- Regional Planning
- Water Supply and Sewage
- Landscaping
- Environmental
- Structural
- Urban Planning
- Architecture
- Overseas Business

Construction

- Specialized Construction
- Surveying
- Supervision and Construction Management
- Project Development

Work Support / Technological Research

- Sales Division
- Management Support
- Technological Research Institute
- Quality control team



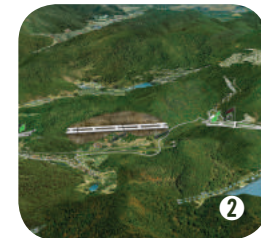
Road



Business Field

Major Projects

- Overseas Business
 - Private Investment Business
 - Turnkey and alternative design
 - Feasibility study and Master plan
 - Basic design and Detailed design
 - Qualified Intonation
 - Design Supervision
-
- Detailed design of Yevlakh-Ganja road expansion (Azerbaijan)
 - Feasibility study of bridge construction in Baku Bay (Azerbaijan)
 - Detailed design of Suwon-Gwangmyeong Expressway(PIB)
 - Basic design of Gumdan-Jangsoo road(PIB)
 - Basic design of Dongjak-Seoul station road(PIB)
 - Qualified Intonation of Eomgung bridge & access road(PIB)
 - Alternative design of Namhae expressway expansion. (Naenheong-Busan)
 - Basic design of Seoul-Incheon canal facilities.(Turnkey)
 - Basic design of Sillim-Bongcheon tunnel & road.(Turnkey)
 - Modification into an underpass for national highway. (Seonnam-janghowon)
 - US Army Garison(USAG) Humphreys land development
 - Detailed design of Kyungin Highway Underpass
 - Detailed design of bridge connecting jamjin & Muui Island



- ❶ Dongjak - Seoul Station Road
- ❷ Namchun ~ Chungdo National Road
- ❸ Expressway 51 Expansion Between Naengjeon and Busan
- ❹ Suwon Gwangmyeong Expressway



Structural & Bridge



Business Field

Major Projects

- Highway and railroad bridge analysis and design
- Detail analysis on special structures
- Feasibility study on subways and structural designs
- Light-rail design (AGT, LIM, Monorail, and etc.)
- Water supply and sewage facility structure design
- Tidal gate of a seawall and water resources structure design
- Pedestrian overpass, retaining wall and channel design

- Sihwa Mult-Techno-Valley 3rd Section
- Suwon ~ Gwangmyeong Expressway
- Access Road Construction for Incheon 2nd Large Span Bridge (3rd Section)
- Pedestrian Bridge Near Seoksu Station
- Seoul Subway Line 9, Station 913
- Seoul Subway Line 7, Station 705
- Busan Subway Line 3, Station 1
- Incheon Subway Line 2, Station 213
- Tidal gate of a seawall in Asan bay
- Yard Structure of Barakah Nuclear Power Plant in the UAE
- South Breakwater of Young-il bay, 1st Section
- Sung-in Underpass and Access Road
- Sungnam~Janghowon Expressway, 1st Section
- Busan New Port Dredged Treatment Area
- Bridge of Connecting Nohwa-Gudo
- Compound / EDGB Building of Nuclear Power Plant of APR+
- Seoknam Rail Extension of Seoul Subway Line 7, 1st Section
- Namhangang Bridge of Gwangju~Wonju Highway
- Semi-Underground Project of Ansan Section in the Suwon~Incheon Railway
- Sheikh Jaber Al-Ahmad Al-Sabah Causeway Project in the Kuwait
- Gangneung Anin Thermal Power Plant

- ① Asan Drainage
- ② South Breakwater of Young-il bay, 1st Section
- ③ Yard Structure of Barakah Nuclear Power Plant in the UAE





Geotechnical & Tunnel



Business Fields

Major Projects

- Tunnel and Underground development
 - Soft ground improvement design
 - Foundation design of structures
 - Slope stability analysis and reinforcement design
 - Excavation and braced cut design
 - Seepage analysis of dam and embankment
-
- Basic design of 08-301-1 Facility Construction (Jeju Naval Base)
 - Basic and detailed design of Pohang yeongil Bay Harbor Outskirts Facility 2-1
 - Basic and detailed design of Incheon North Port infrastructure
 - Detailed design of Busan New Port Container Terminal phase 2-4
 - Basic design of Ulsan New Port South Jetty (2-1 section)
 - Turnkey design of Wirye Bokjung Intersection Facility
 - Detailed design of Incheon Subway Line 2, Station 202
 - Basic and detailed design of Seoul Subway Line 7, Seoknam-Continuation
 - Basic and detailed design of Jungang Line Dodam-Yongchun Railway(11th section)
 - Detailed design of Bukpyeong Thermal Power Plant 345kV underground power transmission line
 - Basic Design of Sinwol rainwater drainage reservoir
 - Detailed design of Busan Eco Delta City Phase 1, 2nd section



- ❶ Expressway 51 Expansion Between Naengjeon and Busan
- ❷ Incheon Port I-1 Container Terminal Construction
- ❸ Incheon Chungra Region land development (Section 2)
- ❹ 08-301-1 Facility Construction(Jeju Naval Base)



Transportation



Business Fields

Major Projects

- Urban traffic maintenance design
- Feasibility study on public transportation improvement
- Megalopolis transportation improvement measures
- Traffic impact analysis and improvement measures
- Road preliminary design and traffic analysis
- Intelligent Transport Systems (ITS)
- Public transportation planning
- Transportation safety improvement

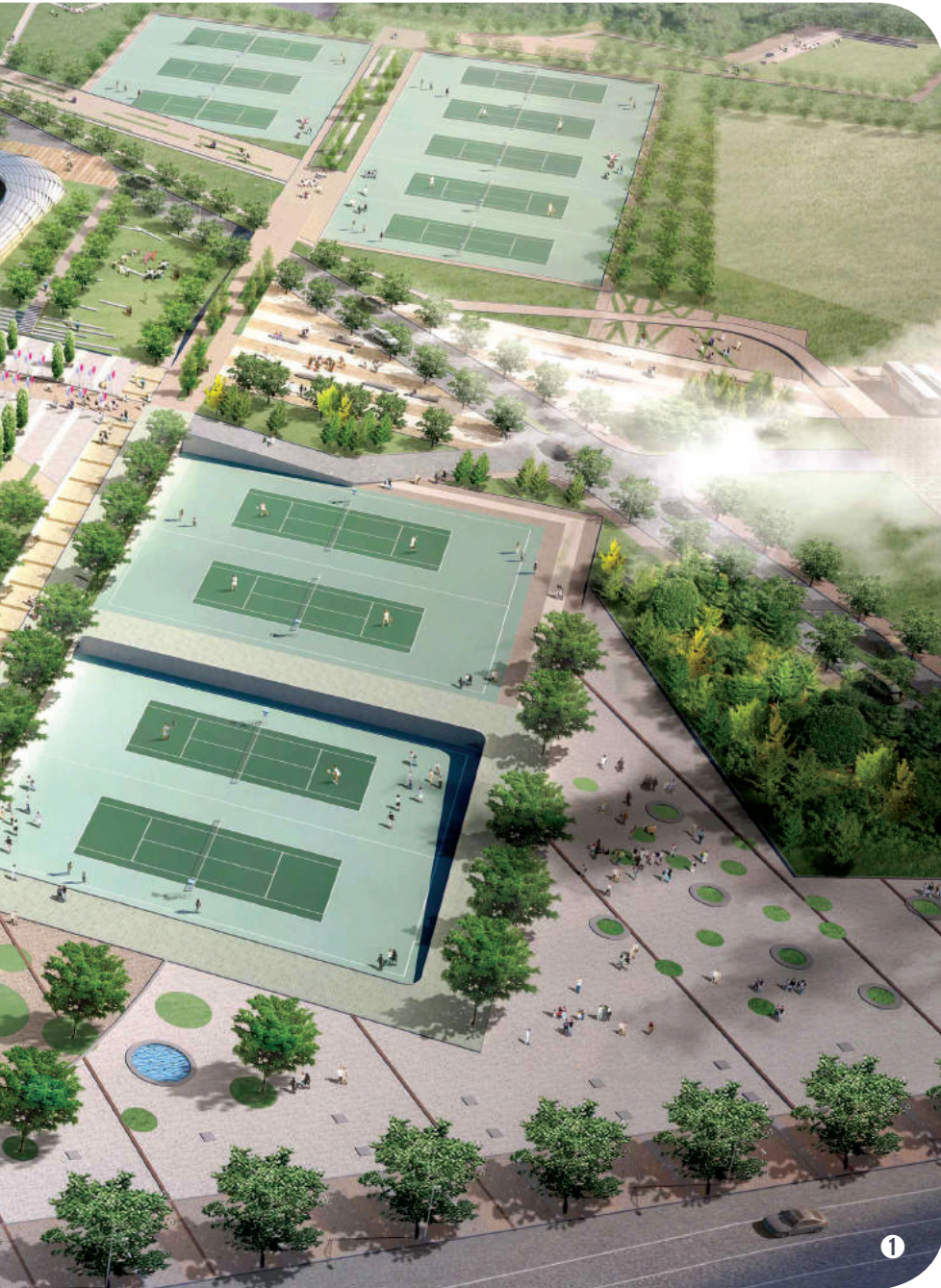
- Incheon Traffic Investigation
- Incheon Seo-gu Parking Lot Condition Assessment
- Busan New Port Road Construction
- Youngsan River Structural Improvement
- 2014 Incheon Asian Games Athletics Complex City
- Traffic impact analysis and improvement measures for Ganghwa Industrial Complex Development Project
- Traffic impact analysis and measurements for Jamsil-dong Happy Housing Construction



- ❶ 2014 Incheon Asian Games Athletics Complex City
- ❷ Traffic Flow Prediction Using EMME3
- ❸ Velovent
- ❹ Bus Lane Management
- ❺ Monorail



Urban Planning



1

Business Fields

Major Projects

- ❶ 2014 Incheon Asian Games Stadium
- ❷ A - B home Housing Complex Project
- ❸ GangHwa Industrial Complex Project
- ❹ Geomdan Region1 Plan

- Comprehensive Plan
- Maintenance Plan
- Lot Development Plan
- Urban Development Plan
- Residential Environment Management Plan
- Urban Planning Facility
- Public Announcement of Topographical Drawing
- Urban Management Plan
- District unit Planning
- Industrial Complex Plan
- A - B home Housing Complex
- Chunma Region Housing Reconstruction Repair and Plan
- GangHwa Industrial Complex Feasibility and Detailed Design
- 2020 Incheon Urban management plan
- SongDo Tour Complex 5BL Masterplan
- SeoWoon Industrial complex Feasibility and Detailed Design
- GuWol District Unit Plan
- NongWon Region Management plan of Residential Environment
- ChunMa Turtle Village Residential Environment Management Plan



2



3



4



Regional Planning



1

Business Fields

Major Projects

- Business feasibility study
- Master planning (residential, redevelopment, industry complex, tourism industry complex, distribution business)
- Basic design (Basic plan review / investigation and analysis design standard modeling / design plan drawing)
- Detailed design (survey report / detail design document)

- 2014 Incheon Asian Games Media Complex
- Gulpo River Canal 2nd Phase
- Siwha Multi-Techno-Valley Construction 3rd Section
- Namyang Local Industrial Complex Design
- SapKyo industrial Complex Working Design
- Banglim Development Business Design
- Pohang Red Sea Sewage Treatment Plant Construction Design
- Azerbaijan (Baku) Facility Complex
- SeoWon industrial Complex Working Design
- GangHwa industrial Complex Working Design



2



3



4

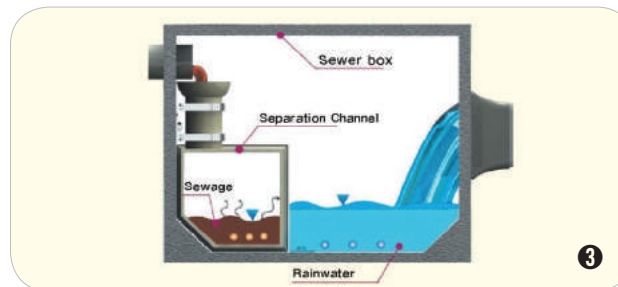
- 1 Aerial View of the 2014 Incheon Asian Games Master Plan
- 2 Gulpo River Canal 2nd Phase
- 3 Siwha Multi-Techno-Valley Construction 3rd Phase
- 4 SapKyo industrial Complex Working Design

Business Fields

- Water Filtration and waste water treatment system
- Basic and detailed design of Water supply and sewage line

Major Projects

- Gongchon Water Filtration Plant 2nd Phase
- Hakik Sewage Treatment Site
- Songdo-Mansu Sewage Line
- Chahang Water Usage for Agriculture



- 1 Aerial View of the Gongchon Water Filtration Plant 2nd Phase
 2 Hakik Sewage Treatment Site
 3 Pipe Assembly of Culvert for Separating Sewage and Rain(Patent No. 10-0733608)



Business Fields

- Planning of Park and tourism development
- Complex landscaping plan (buffer/ aesthetics/ scenery)

Major Projects

- Detailed design of Namdong Culture Green Business Construction
- Detailed design of SongDo 5th and 7th Section GreenBelt
- Feasibility Study of Yongsan Park development project
- Detailed design of Incheon Grand Park Gymnasium Facility Expansion
- Detailed design of Landscape Improvement for Hak Village Park
- Planning of GangHwa industrial Complex Sports Park



- ① Aerial View of the Namdong Culture Green Business Construction
- ② SongDo 5th and 7th Section GreenBelt working design
- ③ GangHwa industrial Complex Sports Park plan



Road Network



Architectural Division



Business Fields

Major Projects

- Architectural design
 - Construction management
 - Feasibility study
-
- Airforce Academy Underwater Training Facility
 - Defense Intelligence of Information Research Laboratory
 - Seongnam Spoland
 - Wonju Hanyeul Seodang
 - Poongjeon Hotel Golf Range and Sauna
 - Korean Road Construction Kyungbuk Branch Repair Business
 - Chungju Housing Construction
 - Incheon Housing Construction
 - Guri Community Housing Complex
 - Buchon Multipurpose Housing Management
 - Incheon Sipjeong-dong Urbantype Housing (Design)
 - Incheon Multi Fashion Outlet (Design)
 - Kimpo Yanggok-ri Mixed-use Facility (Design)
 - Paju Munsan-eup Mixed-use Facility (Design)
 - Chongna Kyungseo-dong 950-23 Mixed-use Facility (Design)
 - Incheon Guwol-dong 9-2 Mixed-use Facility (Design)
 - Incheon Seochang-dong 705 Mixed-use Facility (Design)
 - Incheon Gajwa Smart-tower (Design)



- ❶ Incheon Sipjeong-dong Urbantype Housing (Design)
- ❷ Incheon Multi Fashion Outlet (Design)
- ❸ Kimpo Yanggok-ri Mixed-use Facility (Design)
- ❹ Paju Munsan-eup Mixed-use Facility (Design)
- ❺ Chongna Kyungseo-dong 950-23 Mixed-use Facility



Environmental Division



Business Fields

- Environmental impact investigation and assessment
- Environmental technical consulting
- Basic environmental facilities and sewage culvert analysis
- Underground water and soil contamination clean-up
- Wastewater treatment design

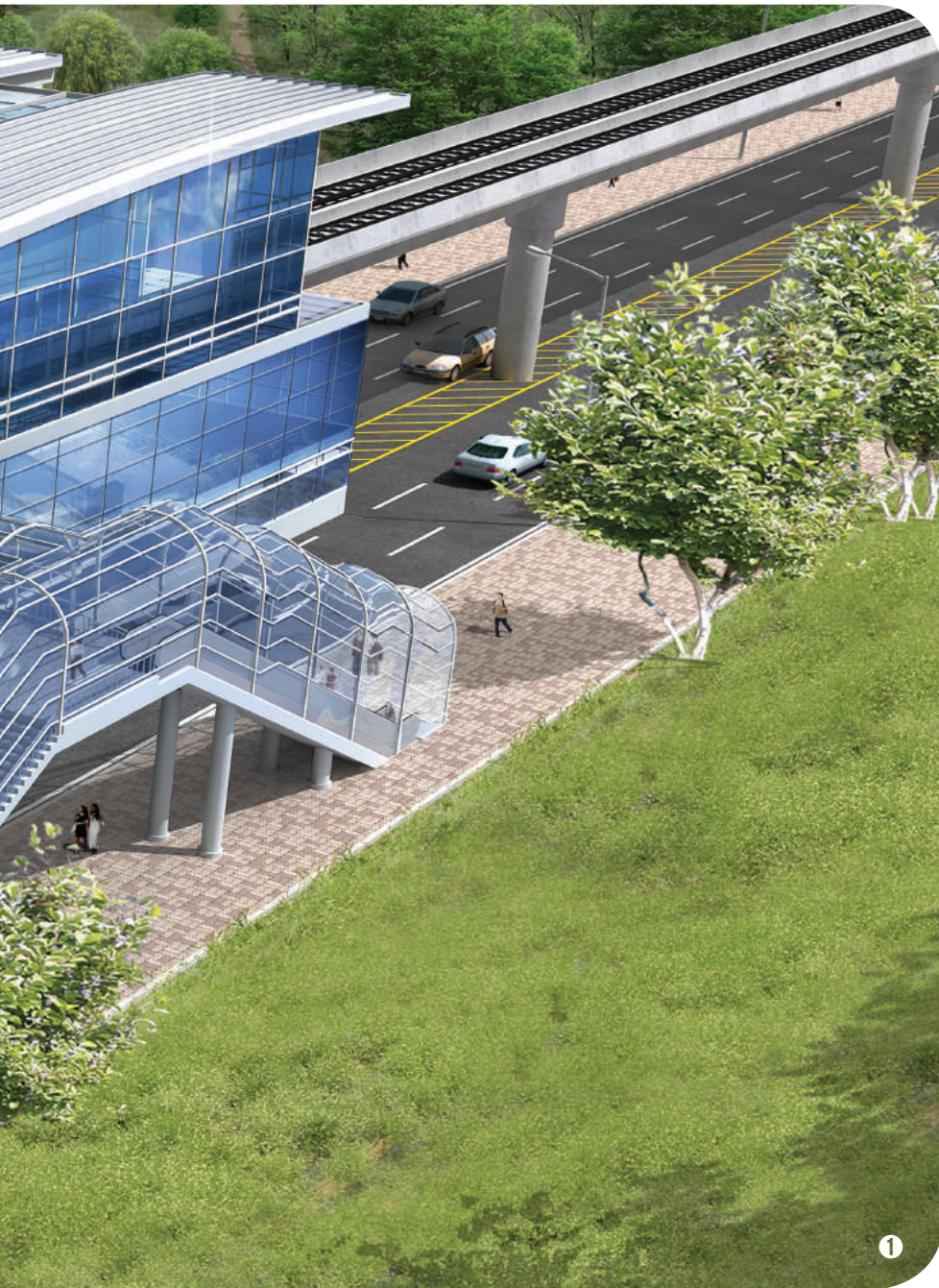
Major Projects

- Jeungpyung Wastewater Treatment Facility Expansion
- Chungnam New City Wastewater Treatment Facility Construction
- Geomdan Industrial Complex Wastewater Treatment Facility
- Yeongsan River Structure Improvement Business
- Sacheon Sewage Maintenance Plan
- Sangsoowon High Altitude Soil and Underground Water Investigation

① sihwa Multi-Techno-Valley Environmental Design



Project Development Business Division



Business Fields

Major Projects

- Project Development
 - Overseas
 - Real estate
- Information collection and analysis
- Financial and technical feasibility study
- Business plan preparation

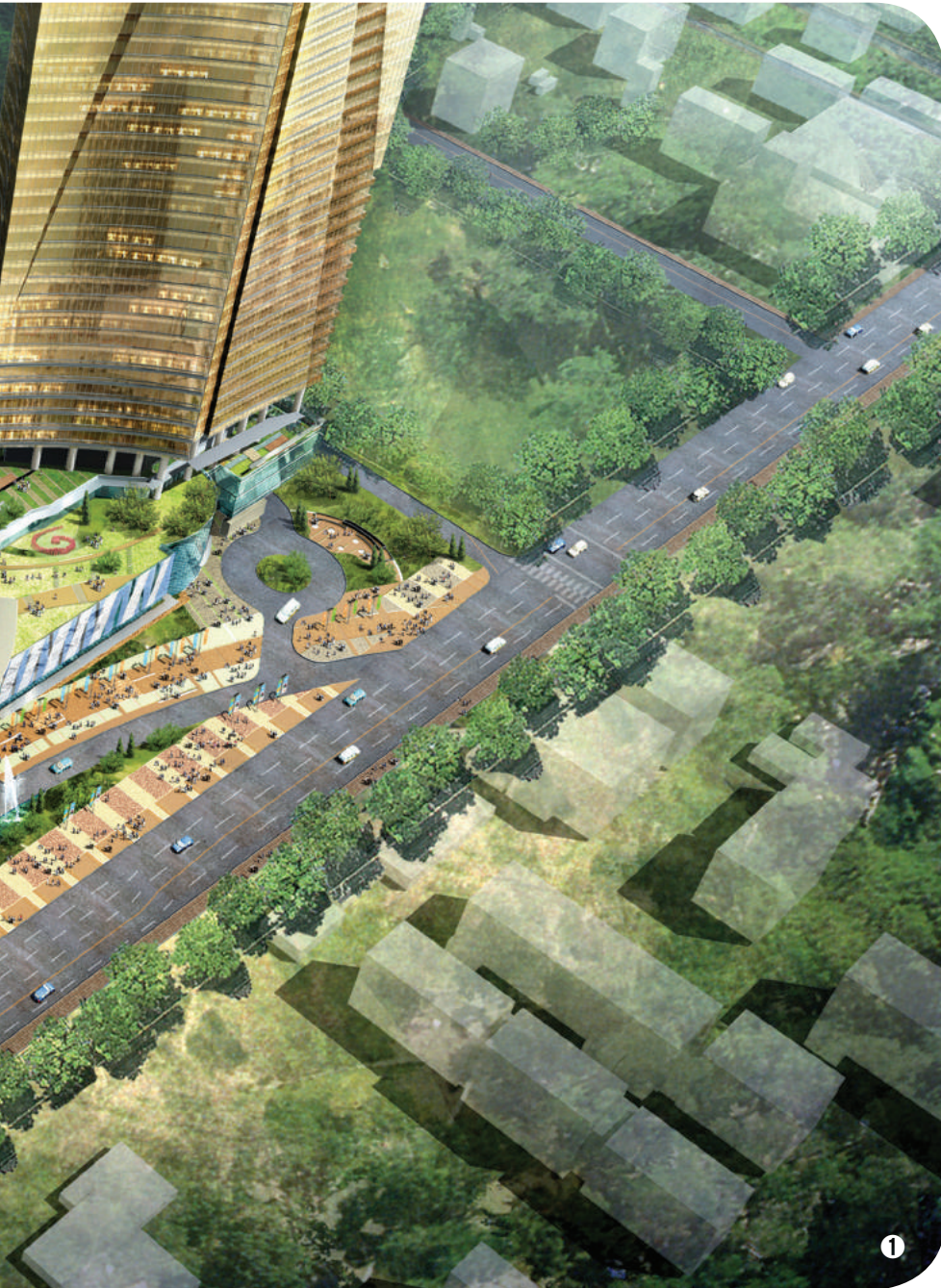
- Suwon ~ Gwangmyeong Expressway
- Dongjak ~ Seoul Train Station Road Construction
- Geomdan ~ Jangsu Expressway Construction
- Busan New Port Hinterland Road Construction
- Kimpo Railway
- SKY Railway
- Busan New Port Container Terminal Phase 2-4



- ❶ SKY Railway
- ❷ Dongjak ~ Seoul Train Station Road Construction
- ❸ Suwon ~ Gwangmyeong Expressway Construction
- ❹ Busan New Port Container Dock



Overseas Business Division



1

Business Fields

Major Projects

- 1 Sky Park, Geotechnical Design
- 2 Yevlakh to Ganja Road Section Widening to 4-Lane, Azerbaijan

- Project Management
- Project planning
- Feasibility study/consulting
 - Transportation
 - Environmental
- Public Private Partnership(PPP)
- Basic and Detailed design
- Engineering and Architecture design
- Design assessment
- Drawings and specifications
- Project financing, arrangements, and quotations

- Yevlakh to Ganja Road Section Widening to 4-Lane, Azerbaijan
- Feasibility Study of Baku Bay Marine Bridge, Azerbaijan
- Geotechnical Design of Sky Park, Azerbaijan
- Singapore Downtown Line Stage3 Contract 923A, 933 Bid details of design
- Singapore Thomson Line T202, T211, T212, T223, T228 Bid details of design



2



Construction



①

Business Fields

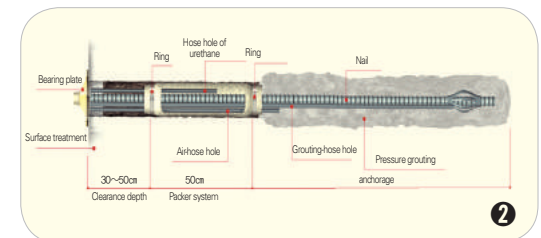
Major Projects

Technological Research Institute

① Hwasung Dokjung Industrial Complex

② Foaming Urethane Packer System

- General construction business
- Specialty civil construction business
- Overseas construction
 - Industrial complex
- Tunneling & slope reinforcement
- Ground reinforcement grouting
 - Retaining wall
 - Pile foundation
- Janggun ~ Masi Road Slope Reinforcement Construction
- Suwon ~ Gwangmyeong Expressway Construction
- Sepung ~ Junggun Road Slope Reinforcement Construction
- Yedanpo ~ Jungsandong Road Slope Reinforcement Construction
- Suwon ~ Incheon Subway Construction
- Suseo ~ Pyeongtaek Subway Slope Reinforcement Construction
- Special War-fare Command Relocation Construction
- Incheon Subway Construction
- Baeksseokcheon Restoration Construction
- Cha-hospital Group Laboratory Earth Work and Retaining Construction
- Samsung, Goyang Industrial Complex Construction
- Foaming Urethane Packer System
(Construction New Excellent Technology No.474, New technology for disaster prevention No.36, Patent No.10-0493927, European Patent No.1375754)
- Caulking Module Method(Patent No.10-1032745)
- Eco-Clean Grouting Method
- Pipe Assembly of Culvert for Separating Sewage and Rain (Patent No.10-0733608)
- Two- Way Pressurized Small Diameter Pipe Pile and
- Anti-Buoyancy Method (Patent No.10-0934796)
- 2--Arch Tunnel Construction Method (Patent No.10-0717849)
- Multi Geo-Bag Module(Patent No.10-1272870)



②



Supervision and Construction Management



Business Fields

Major Projects

- ❶ Incheon Subway Line 2 Project Management
- ❷ Matthau road Construction Management
- ❸ Gyeongin Highway (From Seoul to Incheon) Construction Management
- ❹ Jamjindo Muuido marine long bridges Construction Management

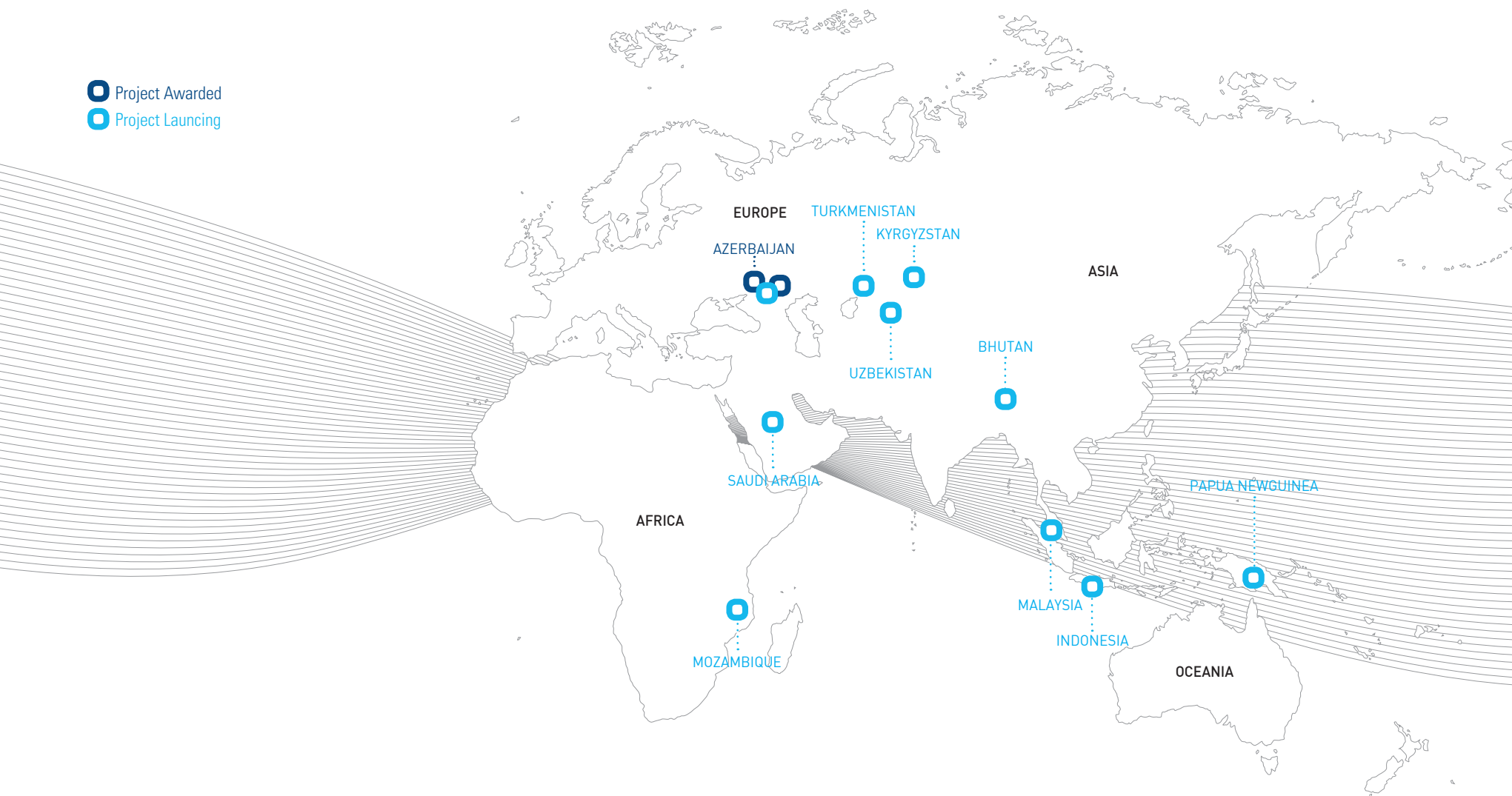
- Civil and architectural construction management
- Construction & project management
- Incheon Subway Line 2 Project Management
- Incheon Second Presbyterian Church Architecture Construction Management
- Nam-dong area of Industrial, Overpass & intersection Bridge Construction Management
- Gyeongin Highway (From Seoul to Incheon) Construction Management
- Incheon North Port site infrastructure construction supervision
- Matthau road building Construction Management
- Incheon Subway Line 2 construction supervision at railway
- Incheon International Airport terminal access roads and parking lot Construction Supervision
- Jamjindo Muuido marine long bridges Construction Management



Overseas Networks & Projects

Dodam is networks with many international companies to stand out amid the globalizing world. We serve important roles as a business partner in order to successfully deliver projects with the quality that satisfies the clients.

- Project Awarded
- Project Launcing



【 Business Partners 】

- Kocks Consult GmbH Consulting Engineers, Germany
- Zulu Burrow Ltd., Zambia
- Ultra Construction & Engineering, Ltd., Korea
- Heerim Architects and Planners, Korea
- Bumjin Industrial CO., LTD., Korea
- Azerinsaatservis LLC., Azerbaijan
- ASPI Consulting Engineers, Inc., Azerbaijan
- Midas, Korea
- Aum&Lee Architects & Associates, Korea



【 Registrations 】

- ADB : Asian Development Bank
- EDCF : EConomic Development Cooperation Fund
- KOTRA : Korea Trade-Investment Promotion Agency
- AFDB : African Development Bank
- KOICA : Korean International Cooperation Agency
- WB : The World Bank

【 Memberships 】

- ITA : Internatoinal Tunneling Space Association and Underground Space Association
- KENCA : Korea Engineering&Consulting Association
- KSCE : Korean Society of Civil Engineers
- KTA : Korean Tunneling Association
- KGS : Korean Geotechnical Society
- KSRM : Korean Society of Rock Mechanics



DODAM

DODAM ENGINEERING & CONSTRUCTION CO.,LTD.

- **Main office** : 4th floor, 40, Yesul-ro 192beon-gil, Namdong-gu, Incheon, Korea **Office number** : +82-32-428-4770 **Fax number** : +82-32-421-4450
- **Gwacheon Branch** : 3F, Anyang Megavalley, 268, Hakui-ro, Dongan-gu, Anyang-si, Gyeonggi-do, Korea **Office number** : +82-31-420-4770 **Fax number** : +82-31-421-4450